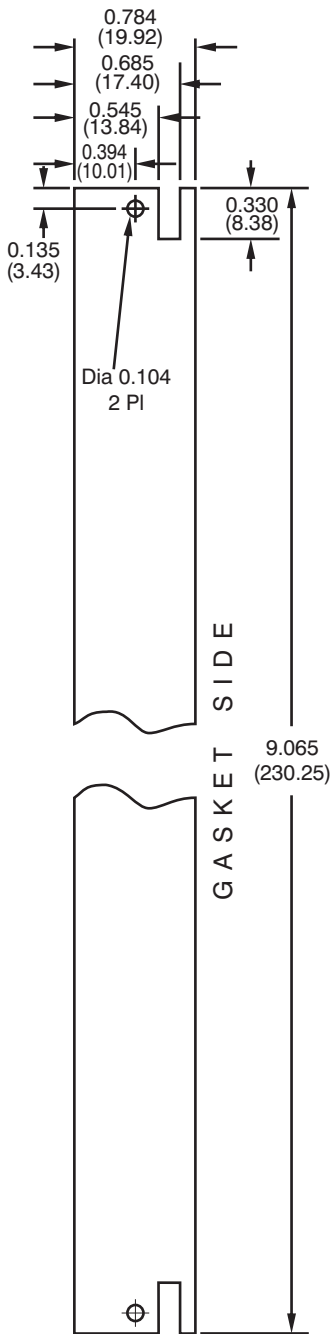
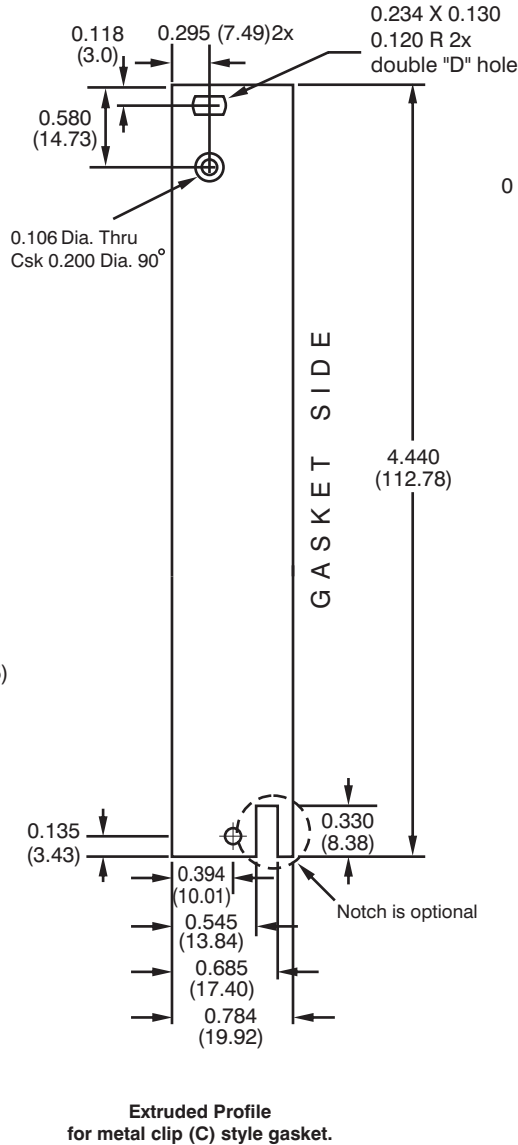


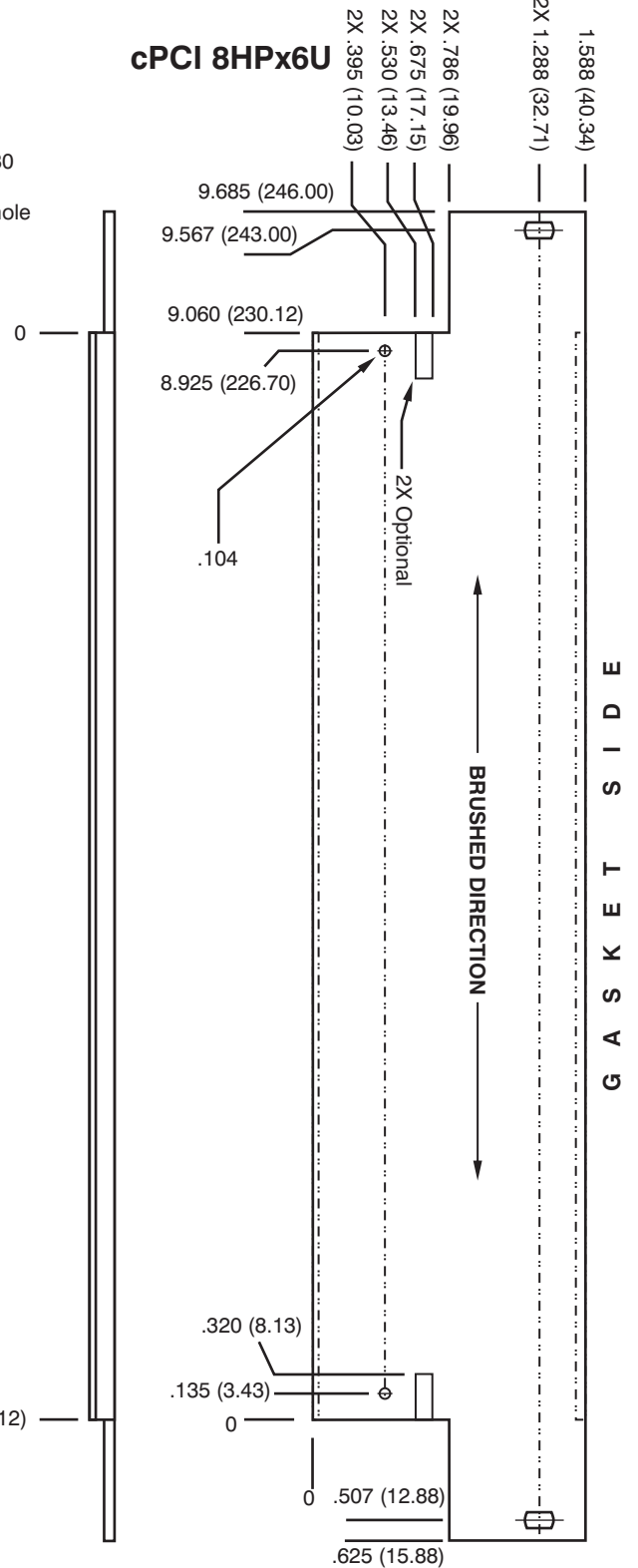
### cPCI 4HPx6U



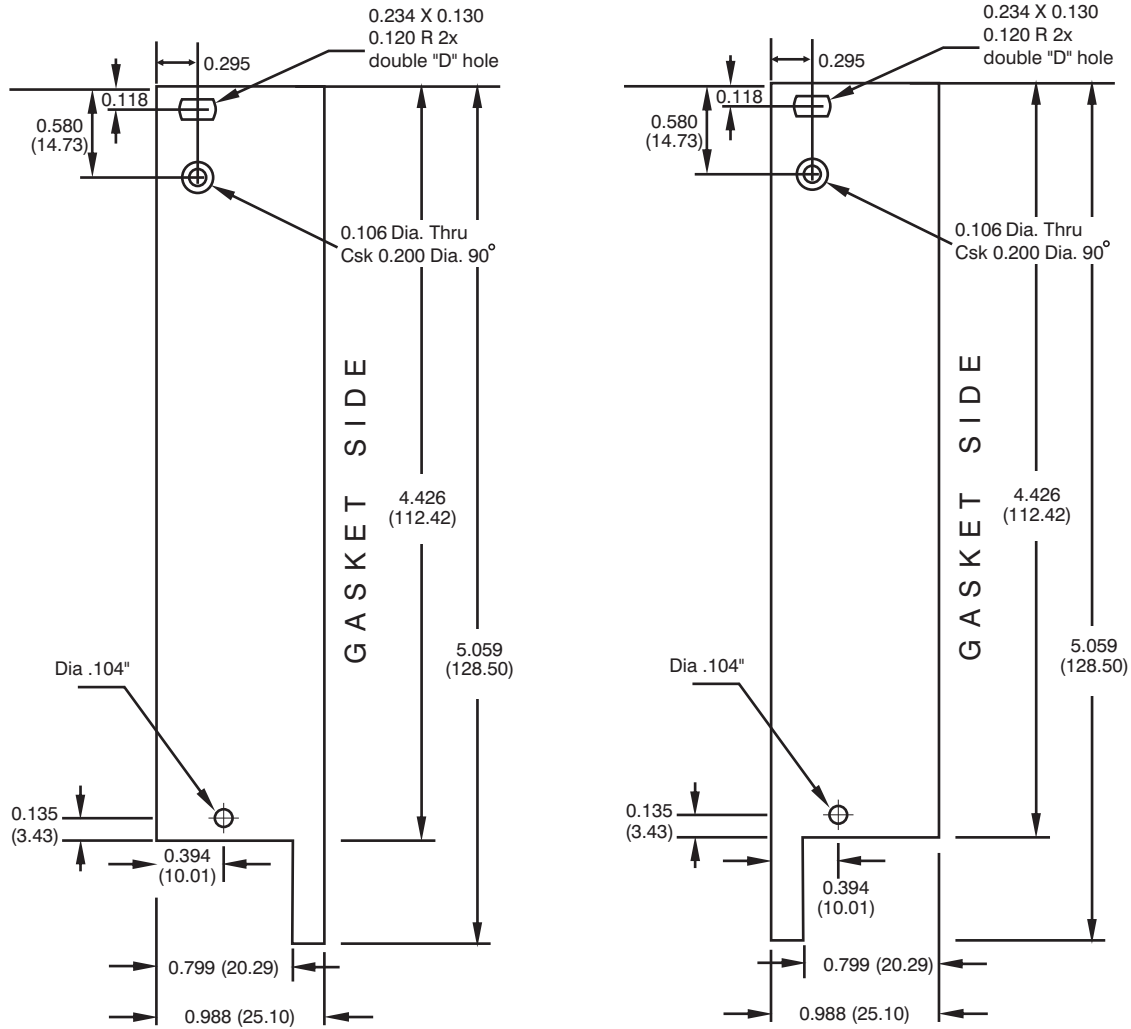
### cPCI 4HPx3U



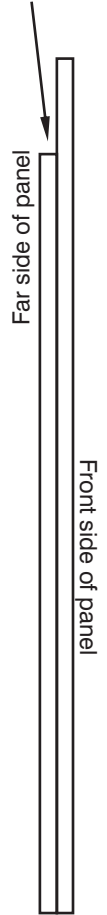
### cPCI 8HPx6U



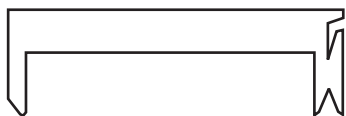
**MATERIAL:** Brushed Aluminum 6063/T6  
Trivalent Chem-Film plated or clear Anodized.  
RoHS compliant.  
**MATERIAL THICKNESS:** 0.098



**.500 always milled  
off top only**

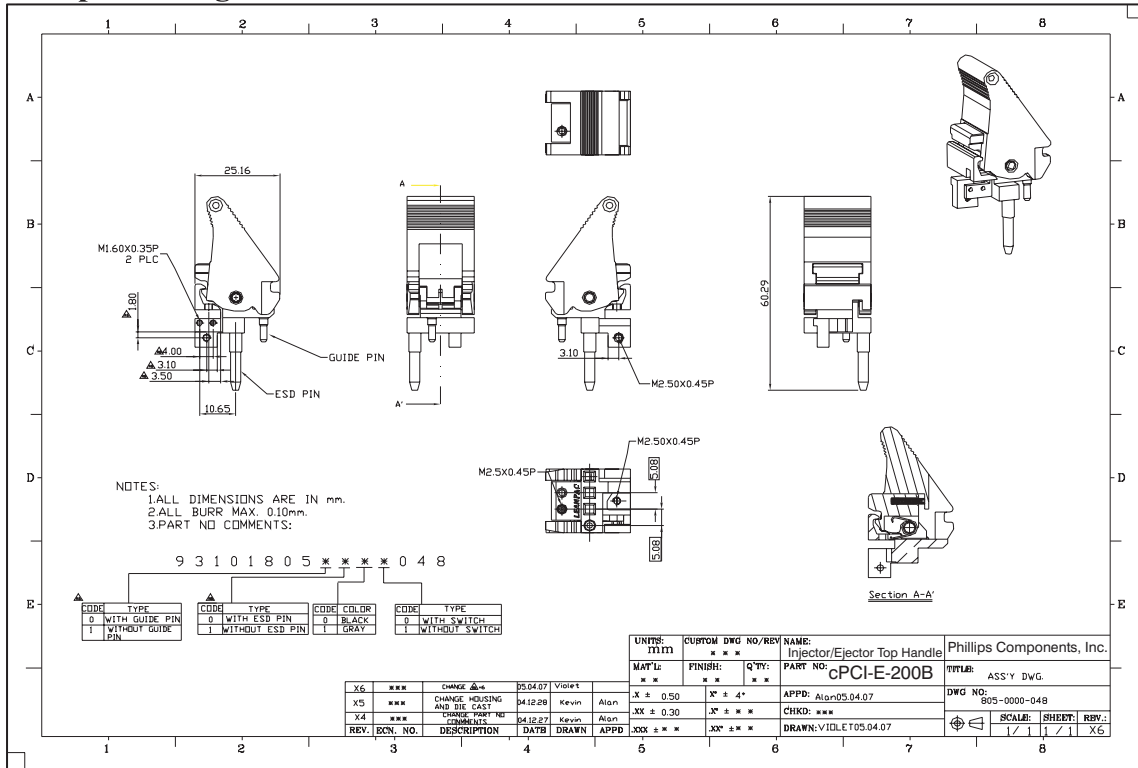


**Metal Clip (C) Extruded Profile**

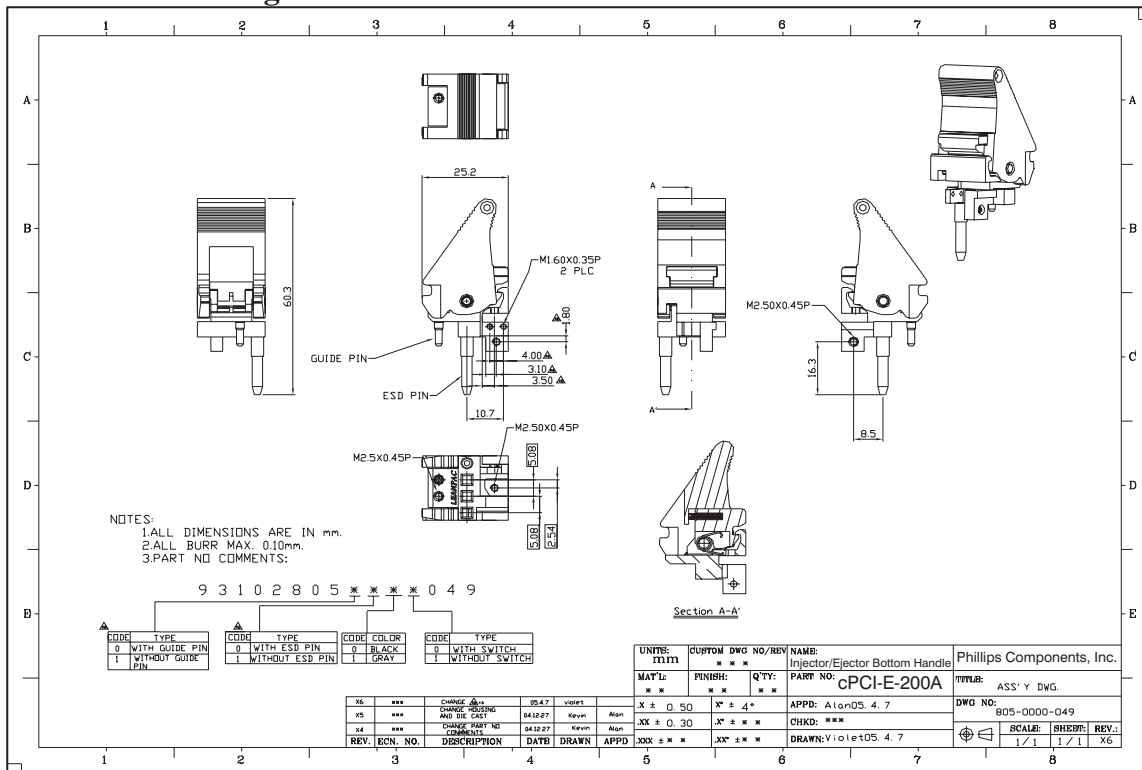


**Aluminum Alloy  
Analy 6063/T6  
Finish: Trivalent  
Clear Irridite  
RoHS Compliant**

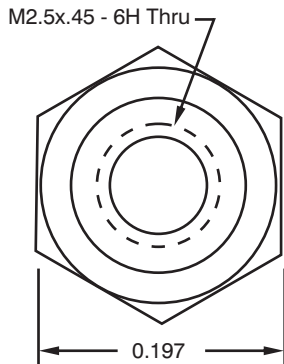
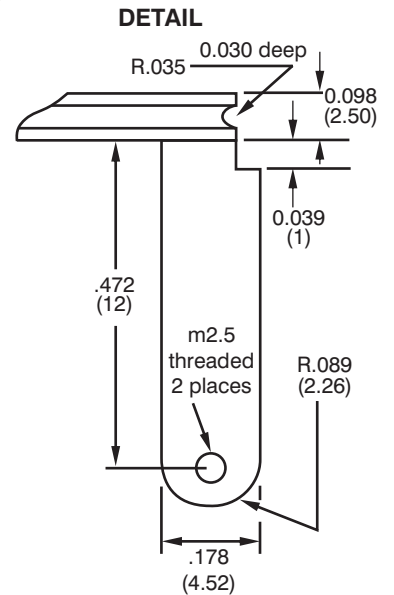
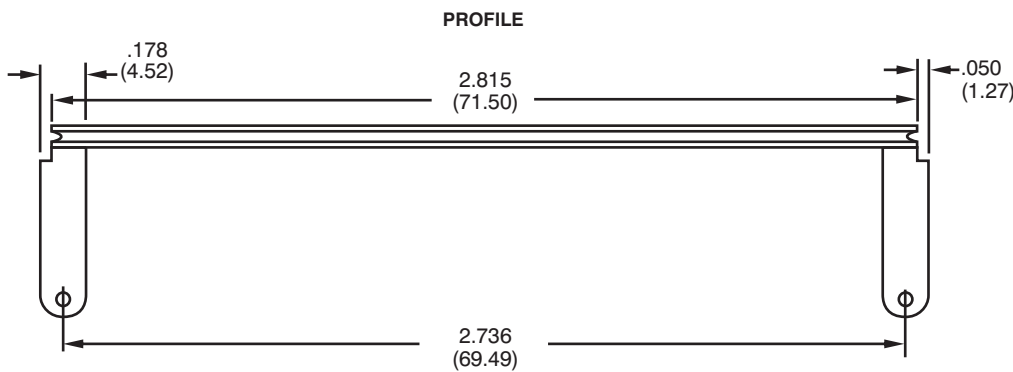
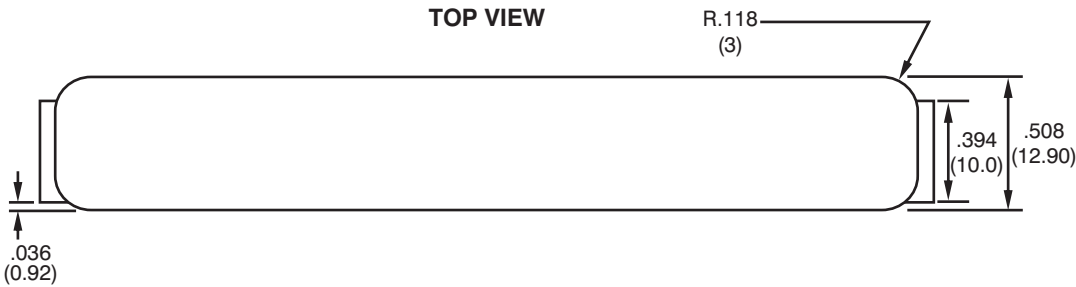
## Top Drawing



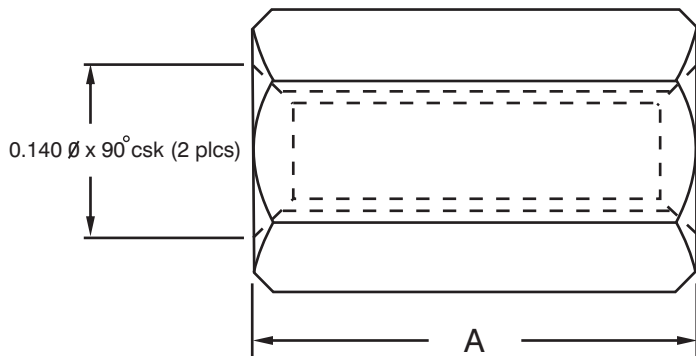
## Bottom Drawing



### PMC 3000



### STAND OFF



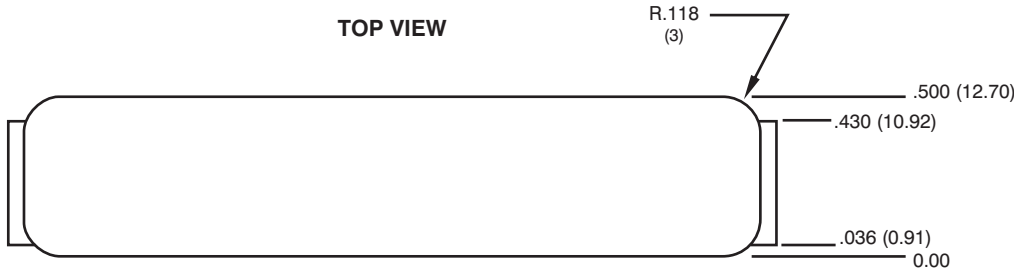
### PART NUMBERS:

- PMC 3000-001: Bezel with gasket, no plating
- PMC 3000-003: Bezel with gasket, black Anodized
- PMC 3000-006: Bezel without gasket, black Anodized
- PMC 3000-007: Bezel with gasket, clear Chem-Film
- PMC 3000-008: Bezel without gasket, clear Chem-Film
- PMC 3000-012: Bezel with gasket, clear Anodized

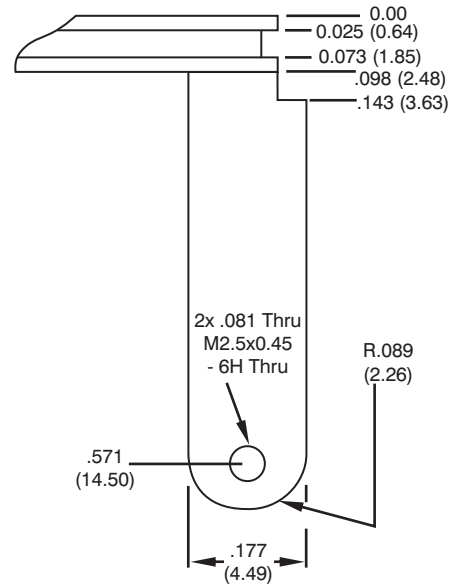
**MATERIAL:** Brushed Aluminum 6063/.T5  
Trivalent Chem-Film plated, clear Anodized,  
black Anodized or unplated.  
RoHS compliant.

**GASKET:** Available with standard or copper gasket.

P/N	A
PMC 3000-011-9	0.354 (9)
PMC 3000-011-10	0.394 (10)
PMC 3000-011-11	0.433 (11)



**DETAIL**



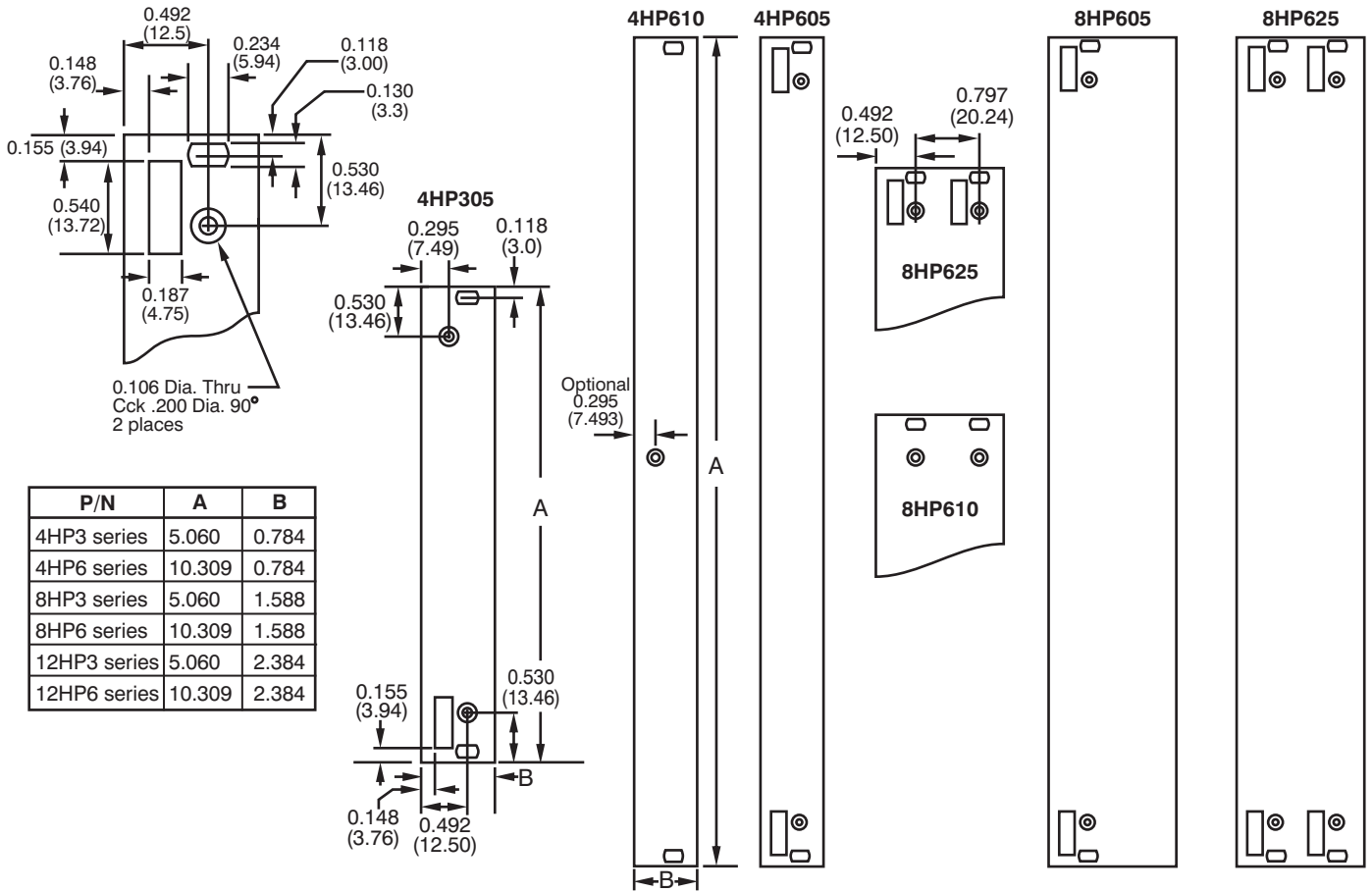
**PROFILE**



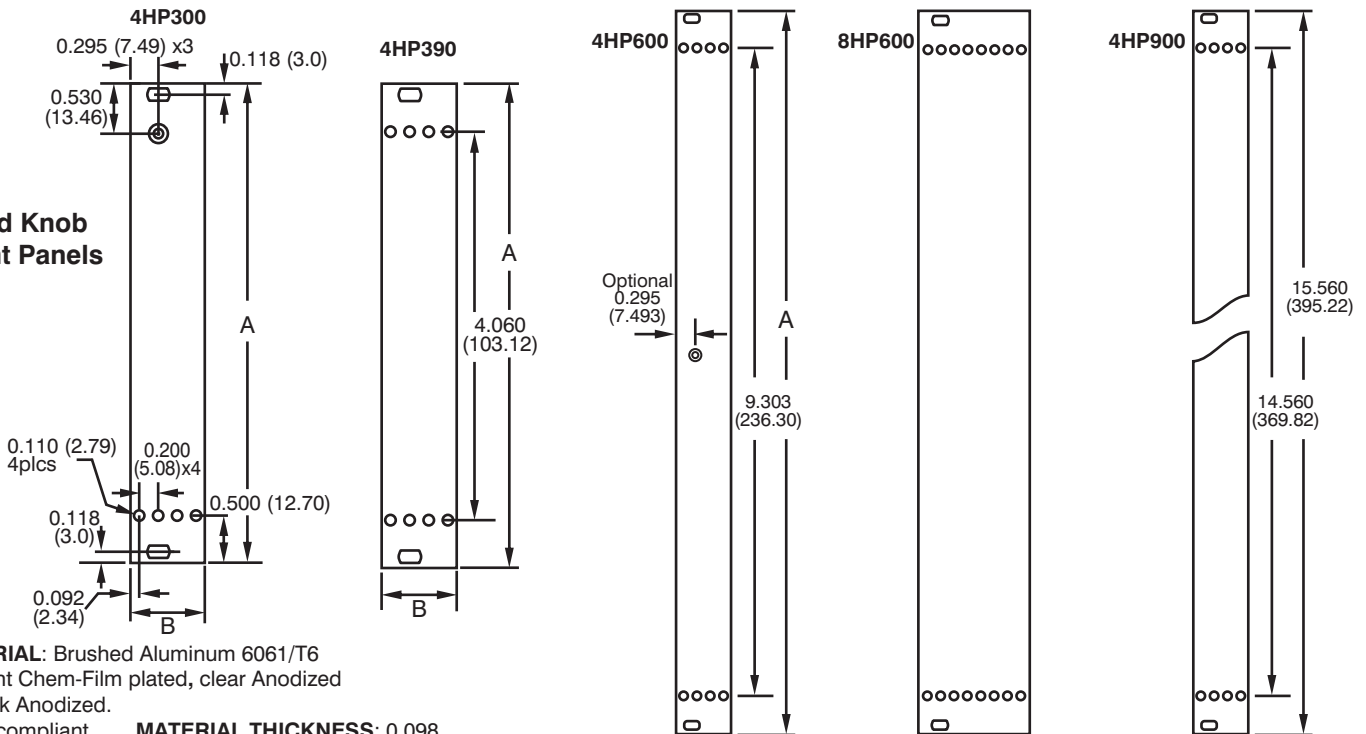
**Aluminum  
6063/.T5**

**RoHS Compliant.**

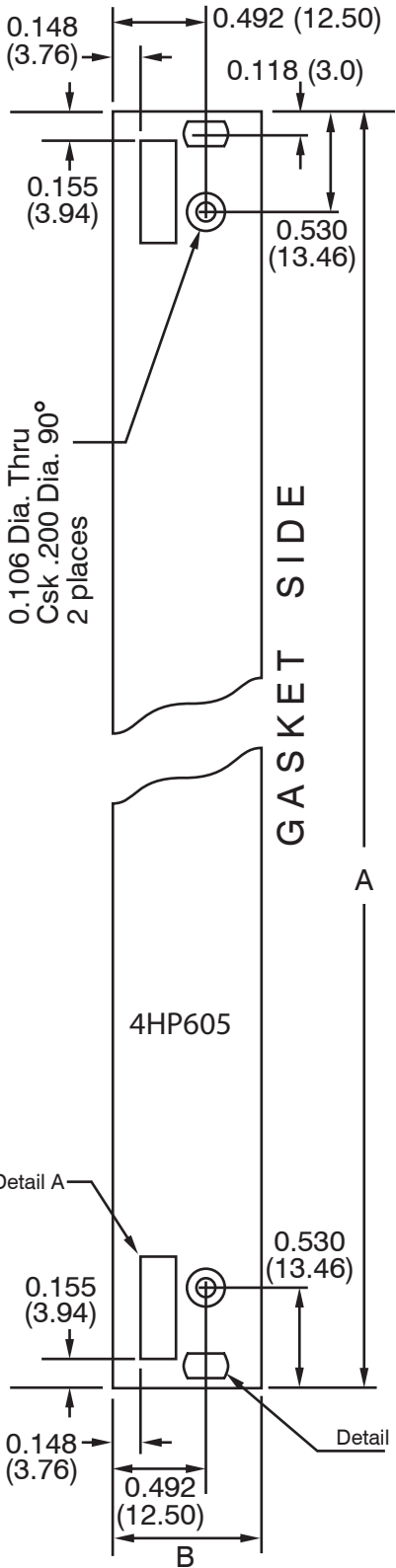
**Available in various finishes.**



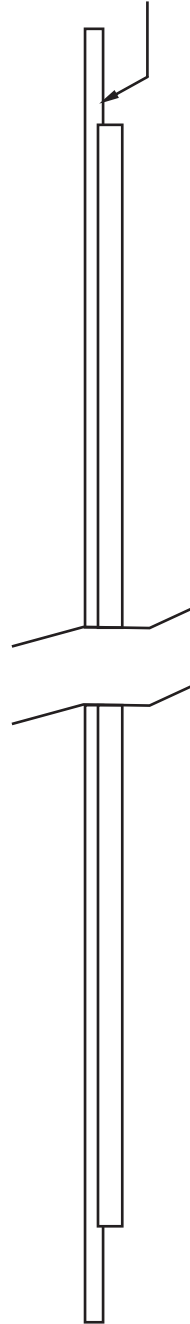
### Fixed Knob Front Panels



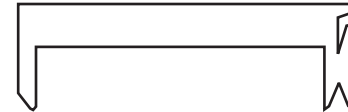
**MATERIAL:** Brushed Aluminum 6061/T6  
 Trivalent Chem-Film plated, clear Anodized  
 or black Anodized.  
 RoHS compliant. **MATERIAL THICKNESS:** 0.098



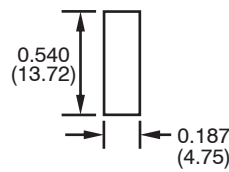
0.500 (12.7) milled off  
top and bottom



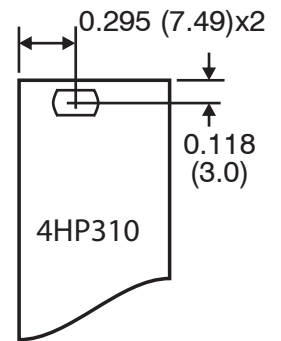
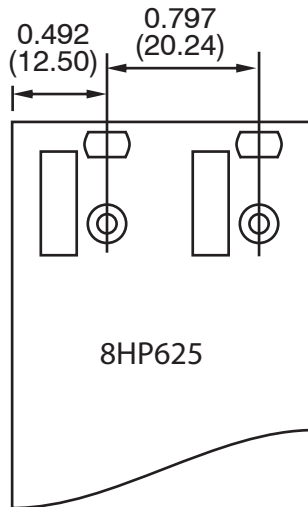
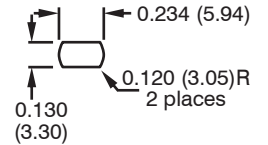
Extruded Profile  
for metal clip (C) style gasket.



Detail A



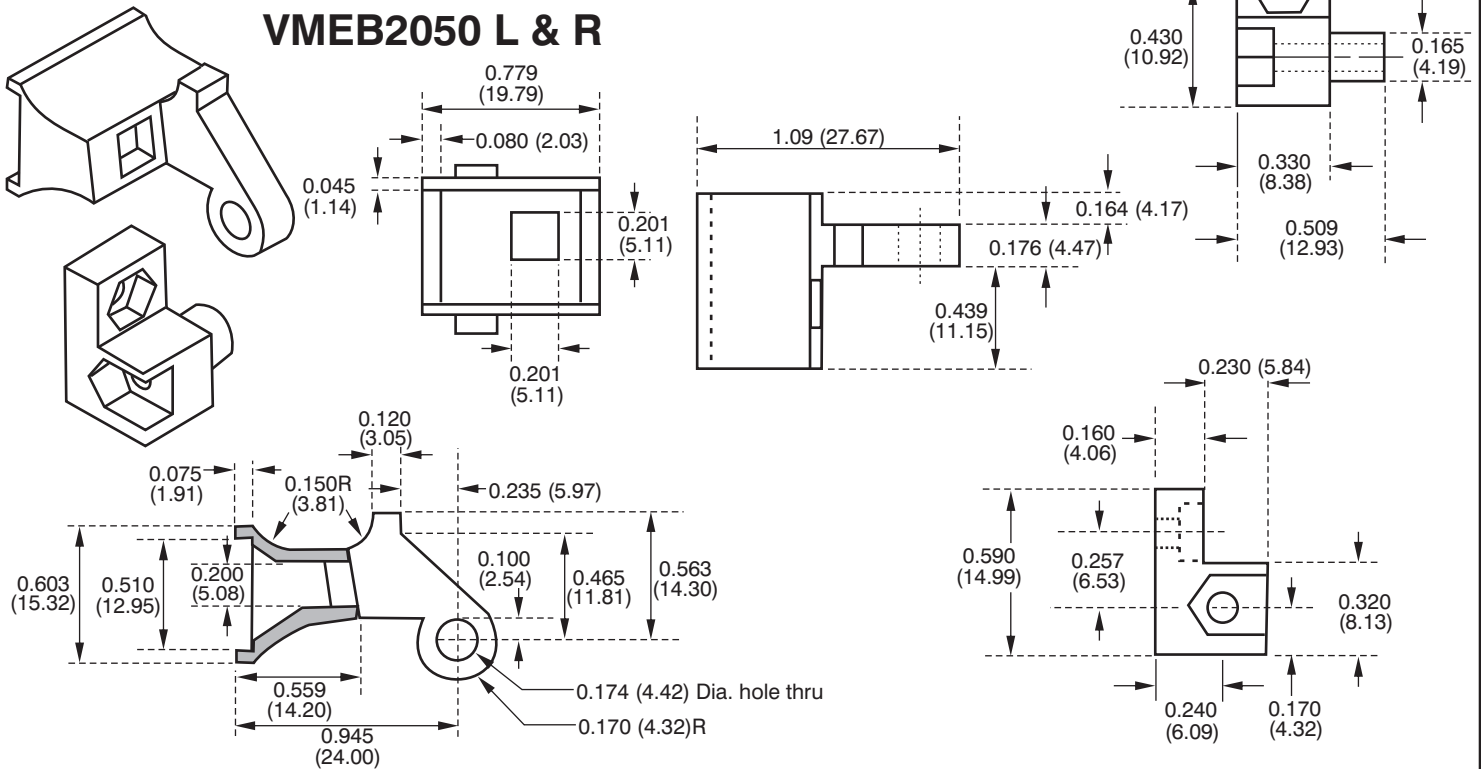
Detail B



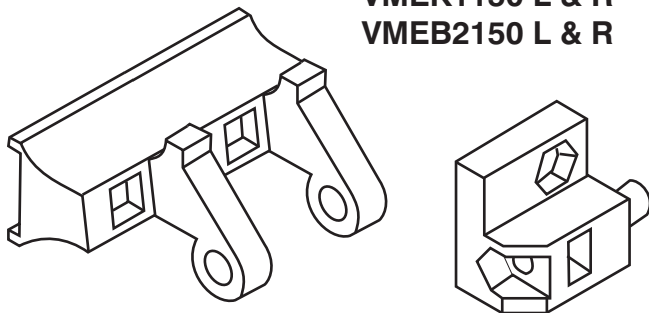
P/N	A	B
4HP3 series	5.060	0.784
4HP6 series	10.309	0.784
8HP3 series	5.060	1.588
8HP6 series	10.309	1.588
12HP3 series	5.060	2.384
12HP6 series	10.309	2.384

MATERIAL : Brushed Aluminum 6063/T6  
Trivalent Chem-Film plated or clear Anodized.  
RoHS compliant.  
MATERIAL THICKNES S : 0.098

### VMEK1050 L & R VMEB2050 L & R



### VMEK1150 L & R VMEB2150 L & R



Nylon 6/6 30% glass  
V0 RoHS is Rev. R

VME Hardware Kits

#### VME 6U1450:

- 1 ea. VMEK1050 L&R knobs
- 1 ea. VMEB2050 L&R brackets
- 1 VMEB2200 support bracket
- 2 VMEP5050 ID Plates
- 3 M2.5x8,
- 1 M2.5x10
- 2 VMES4000
- 2 VMER3050
- 2 M2.5x14
- 6 M2.5x45P hex nuts.

#### VME 3U1450:

- 1 VMEK1050L knob
- 1 VMEB2050L support bracket
- 1 VMEB2200 support bracket
- 2 VMER 3050 retainer sleeves
- 2 VMES4000 captive screws
- 1 VMEP5050 ID plate
- 2 M2.5x8, 1 M2.5x10
- 1 M2.5x14 screws
- 4 M2.5x45P hex nuts.

#### VME 3U1400:

- 1 VMEK1000 knob
- 1 VMEB2000 support bracket
- 1 VMEB2200 support bracket
- 2 VMER 3050 retainer sleeves
- 2 VMES4000 captive screws
- 1 VMEP5000 ID plate
- 1 M2.5x8, 2 M2.5x10
- 1 M2.5x16 screws
- 4 M2.5x45P hex nuts.

#### VME 6U1400:

- 2 VMEK1000 knobs
- 2 VMEB2000 support brackets
- 1 VMEB2200 support bracket
- 2 VMER3050 retainer sleeves
- 2 VMES4000 captives screws
- 2 VMEP5000 ID Plates
- 1 M2.5x8
- 3 M2.5x10
- 2 M2.5x16 screws
- 6 M2.5x45P hex nuts.

#### VME 6U2450 kit:

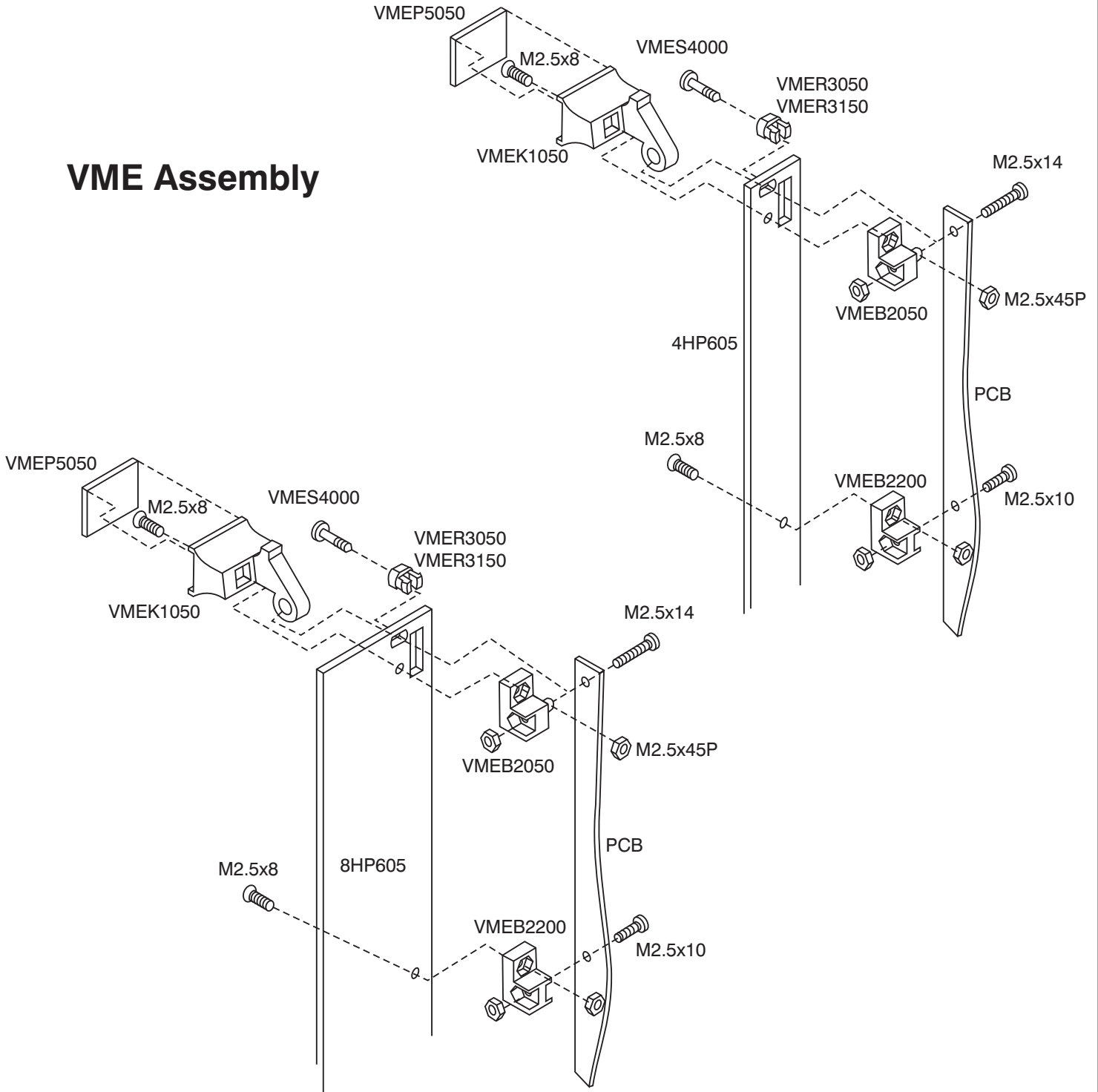
- 1 ea. VMEK1150 L&R knobs
- 1 ea. VMEB2150 L&R brackets
- 2 VMEP5150 ID Plates
- 1 each VMEB2050 L&R brackets
- 2 VMEB2200 support brackets
- 4 VMER3050 retainer sleeves
- 4 VMES4000 captive screws
- 4 M2.5x14
- 2 M2.5x10
- 6 M2.5x8 screws
- 12 M2.5x45P hex nuts.

#### VME 6U2400:

- 2 VMEK1100 knobs
- 2 VMEB2000 brackets
- 1 VMEB2200 bracket
- 2 VMER3050 retainer sleeves
- 2 VMES4000 captive screws
- 2 VMEP5100 ID Plates
- 1 M2.5x8
- 3 M2.5x10
- 2 M2.5x16 screws
- 6 M2.5x45P hex nuts.

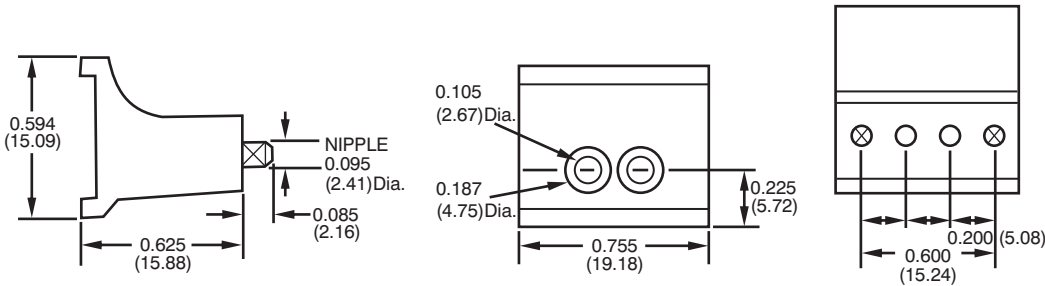


### VME Assembly

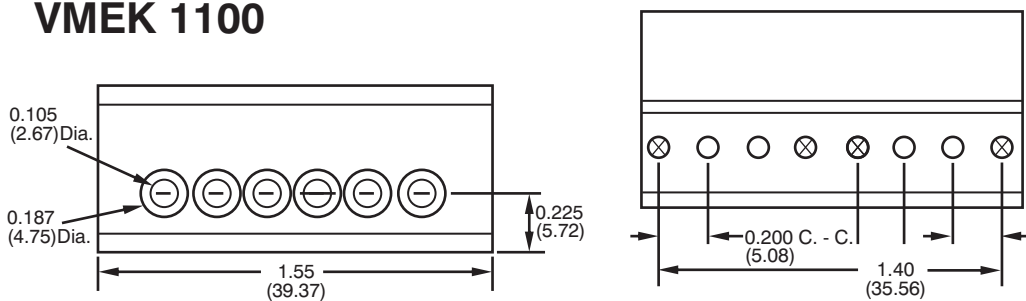


### Fixed Panel Knobs

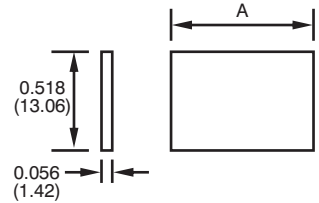
#### VMEK 1000



#### VMEK 1100



### I.D. Plates



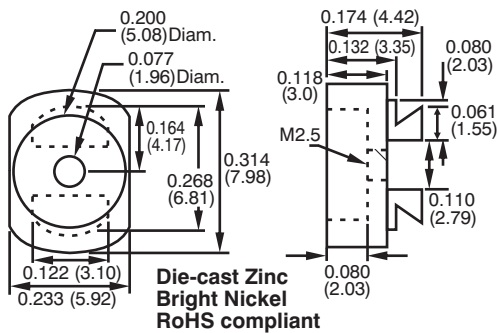
	A
VMEP5050	0.748
VMEP5150	1.55
VMEP5350	2.32

6061/T6 Anodized Extruded Aluminum  
Custom Marking Available

Nylon 6/6 30% glass  
V0 RoHS is Rev. R

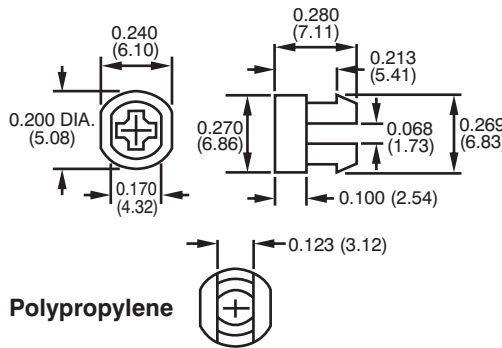
### Metal Retainer Sleeves

#### VMER3150M



### Plastic Retainer Sleeves

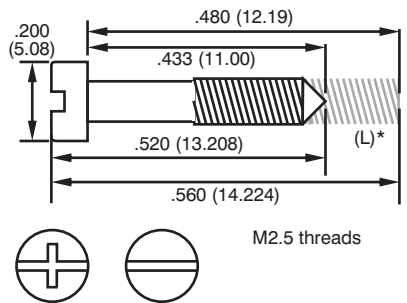
#### VMER3050



### VMES4000

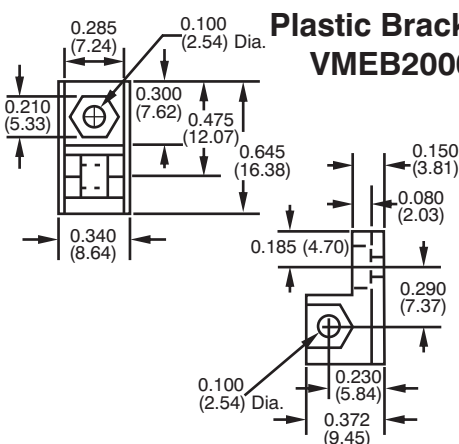
#### VMES4000PH

#### VMES4000L



### Plastic Brackets

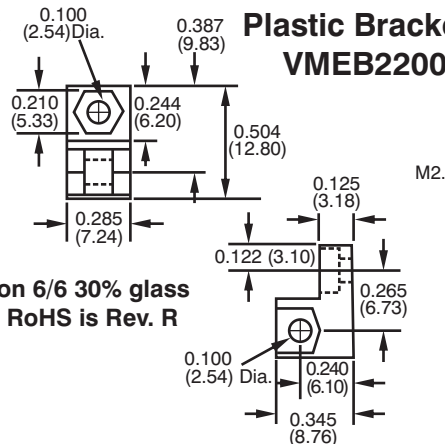
#### VMEB2000



Nylon 6/6 30% glass  
V0 RoHS is Rev. R

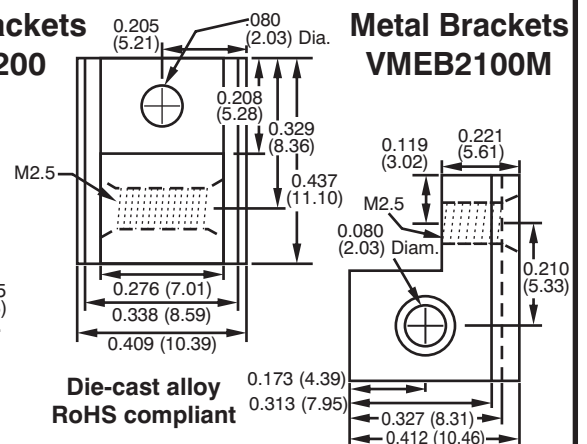
### Plastic Brackets

#### VMEB2200

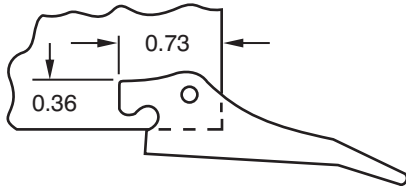


### Metal Brackets

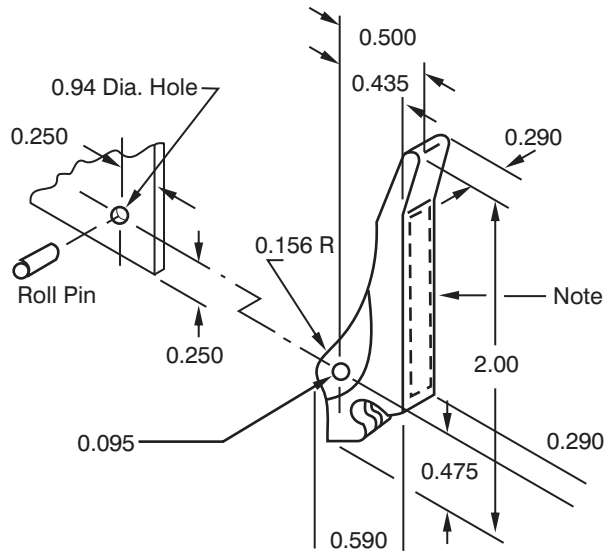
#### VMEB2100M



**E-7**  
**E-7-RS**  
**E-7-780**  
**E-7-780-RS**  
**E-7-790**  
**E-7-790-RS**



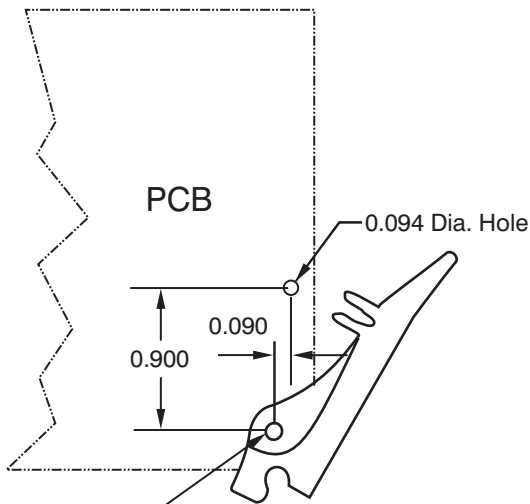
Card clearance required when rotated.



Note: Recessed label area for part numbers indicated with "RS".

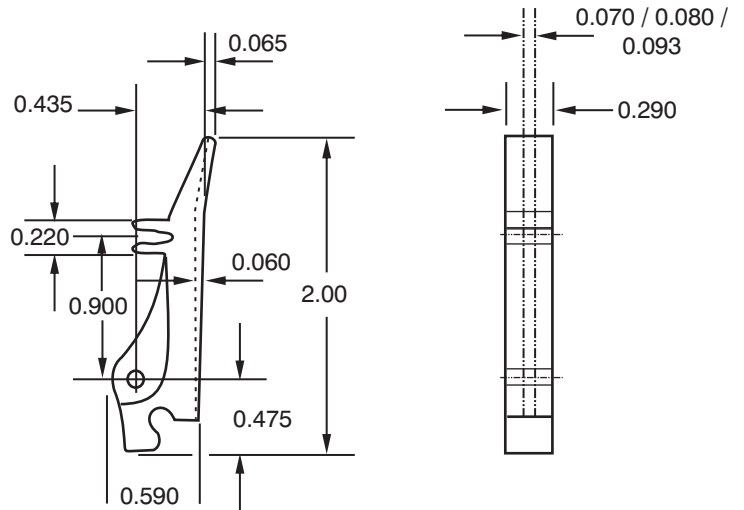
Dotted area  
0.25 x 1.32  
depth 0.016

**EL-7**  
**EL-7-RS**  
**EL-7-790**

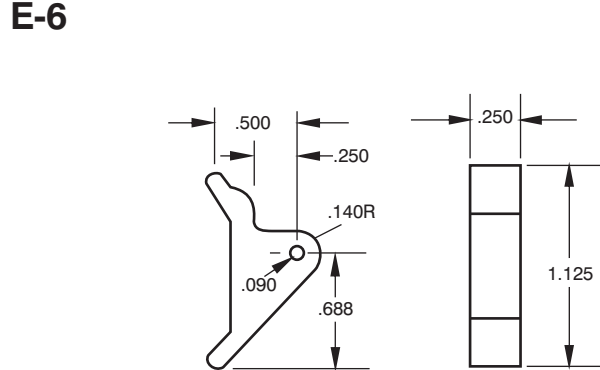
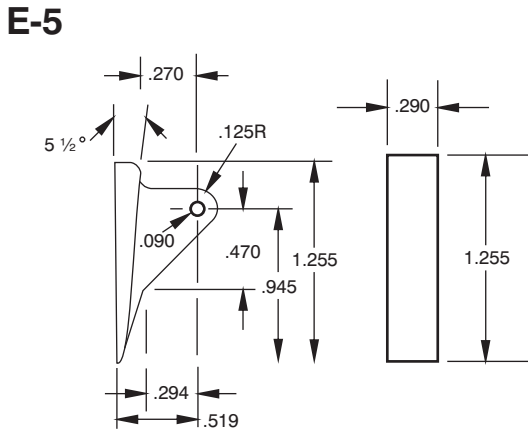
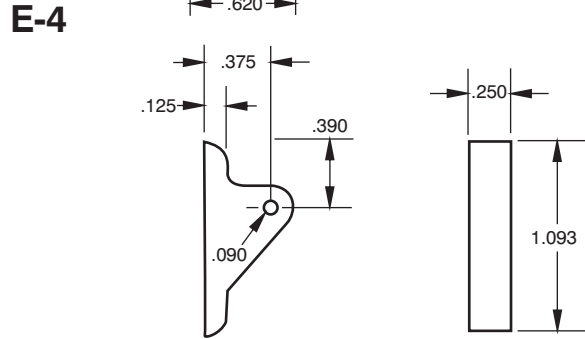
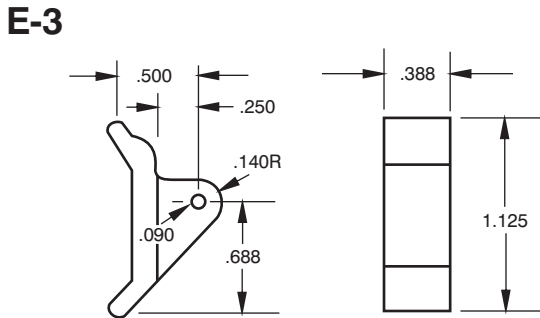
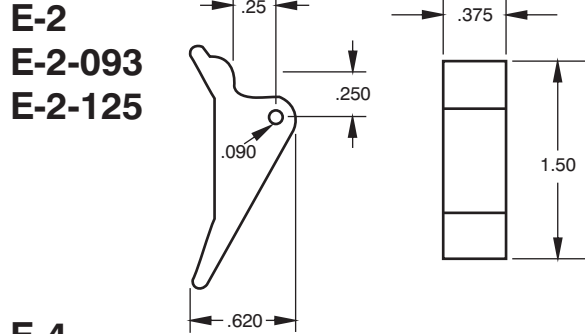
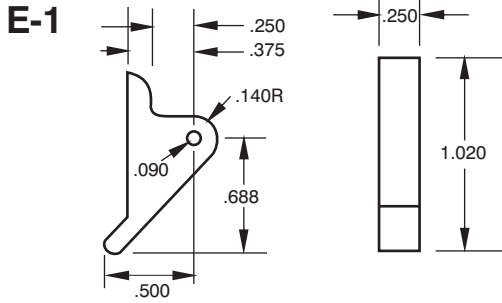


Assembly Pin  
2 Plcs

**ROLL PIN:** Stainless Steel (3/32" Dia. x 1/4" long)  
furnished with each ejector.  
Two (2) furnished with each "L" series ejector.



**MATERIAL:** 30% glass-filled nylon 6/6  
Meets UL 94V-0. RoHS compliant.



**MATERIAL:**  
Nylon 6/6. Meets UL 94V-2

**Roll Pin:**  
Stainless Steel.  
Furnished with each extractor.

**APPLICATION DATA:** Fits 1/16" thick boards.  
Except E-2-093 fits 0.093 boards.  
E-2-125 fits 0.125 thick boards.

**\* Custom hot stamping of numbers, letters and logos!**

**\* Numerous colors available!**

